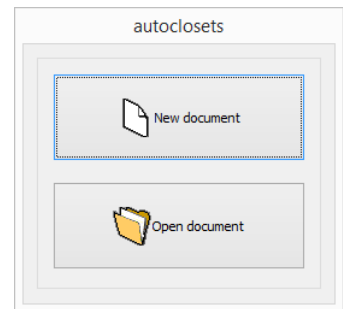


autoclosets® 12

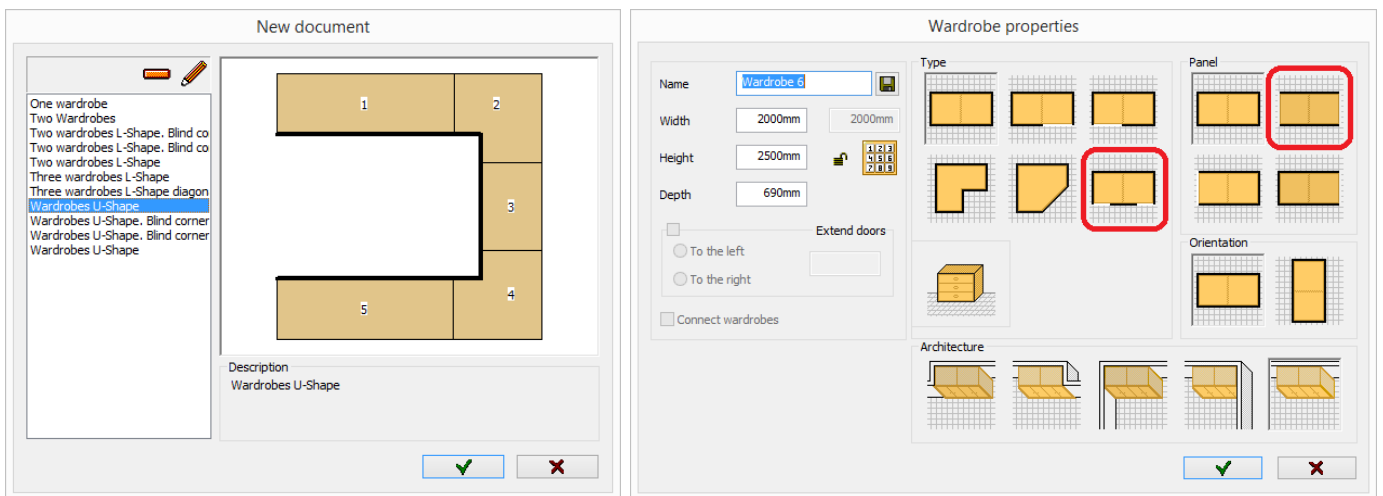
Main features compared to version 11

New program start

New program start. Now you can choose between 'New document' and 'Open document'. When selecting 'New document', you will be able to choose among multiple templates.

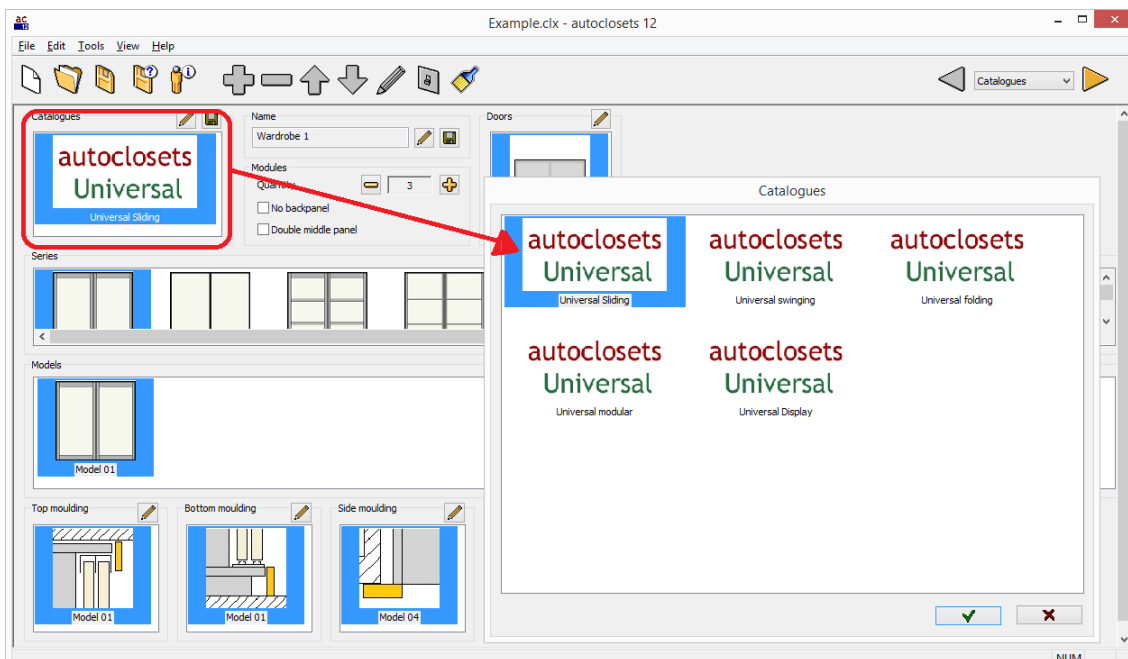


The existing templates have been updated and new ones have been added. In order to update these templates, two new cabinet configurations have been added.

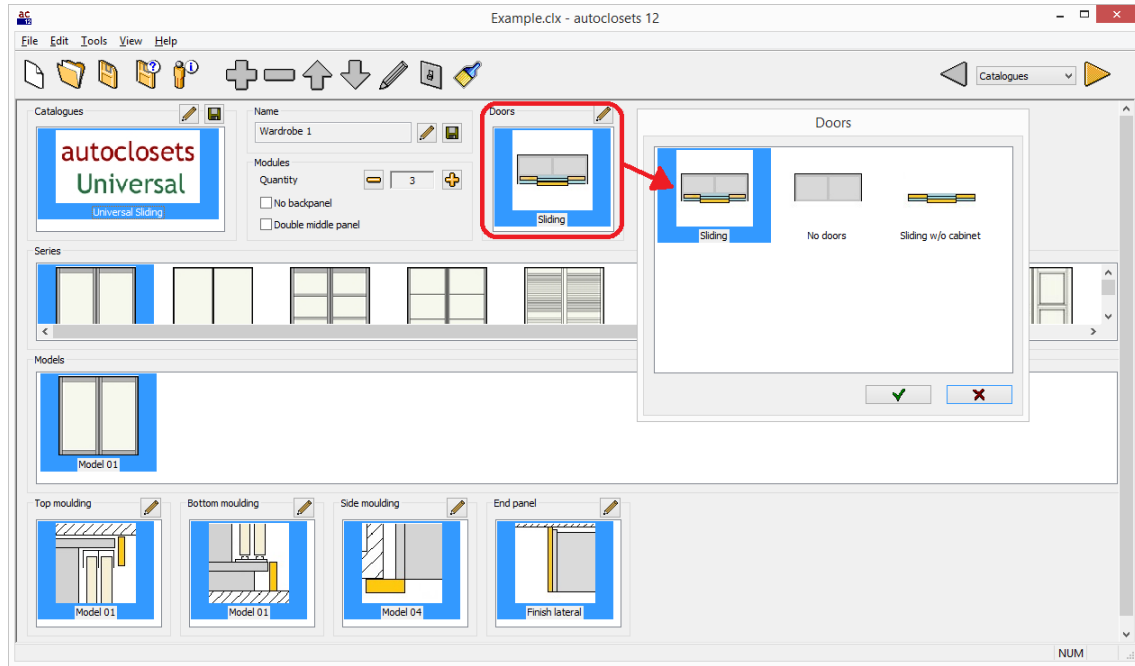


Easier 'Catalogues' screen

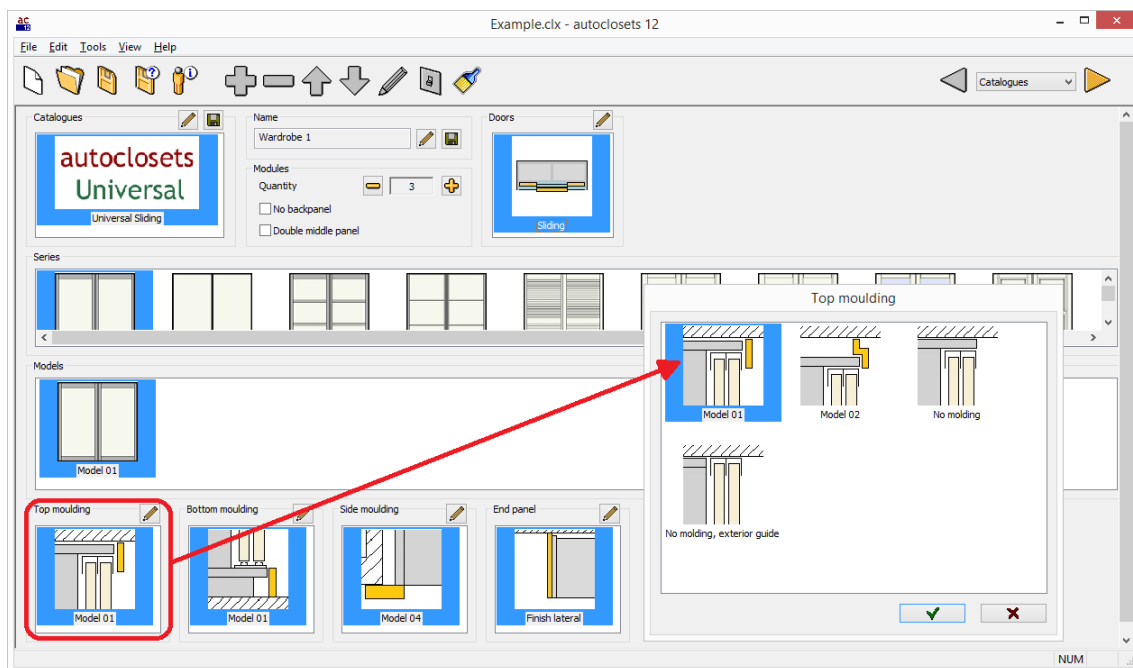
The user interface has been updated to operate more easily and faster. The catalogue to be used in the design is shown at the top-left corner of the screen. You can change the catalogue by clicking on the pencil icon or in the 'Catalogues' box.



The 'Doors' selection is done by clicking on the pencil icon or on the 'Doors' box. The displayed options depend on the catalogue: wardrobe with doors (sliding, folding or swinging), wardrobe without doors or just the front of the wardrobe without cabinets (doors plus mouldings).

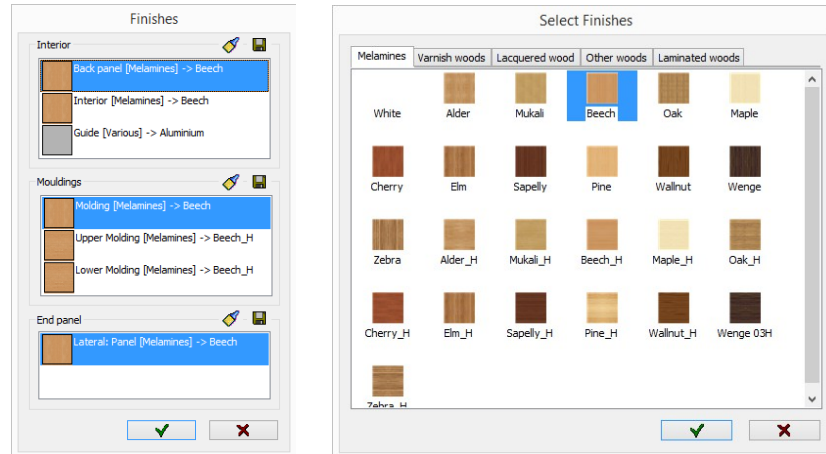


New 'Moulding' selection:



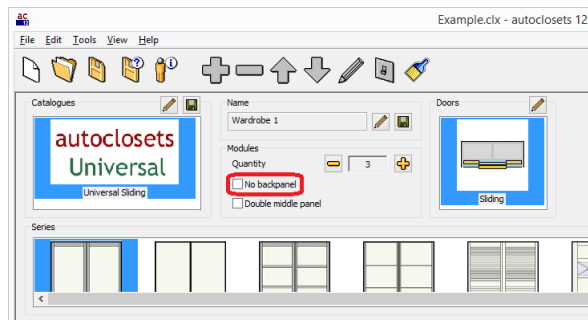
All selected moulding models are shown on the screen. By clicking on the pencil icon you can select a new model.

The 'Finishes' dialogue has been redesigned to look cleaner. A new diskette icon in every group of materials allows you to save the selected materials for the interior, mouldings and end panel as default.

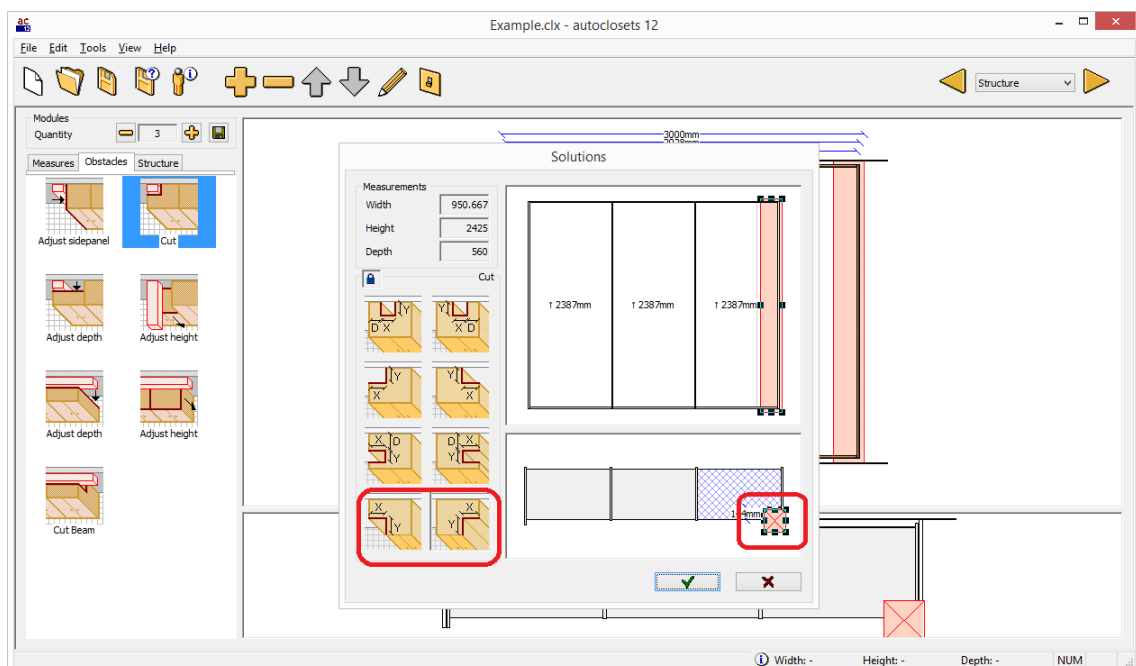


New construction options

A new option for wardrobe without backpanel that can be selected in the main screen next to the double middle panel option.

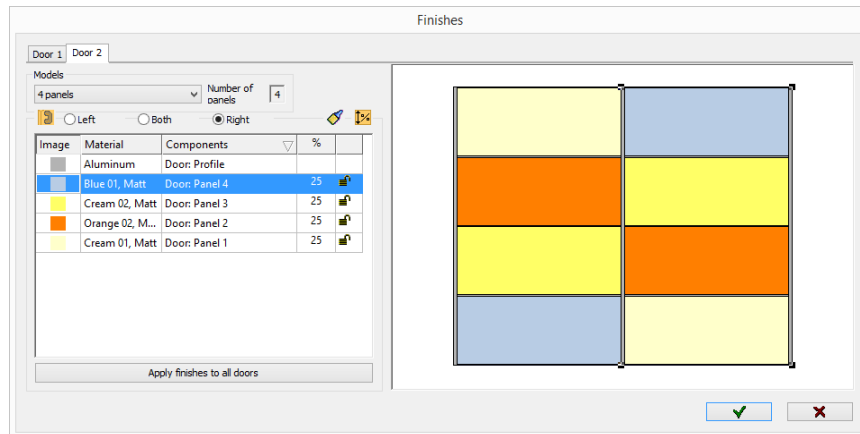


A new option to place a pillar on the front.



New selection of door materials

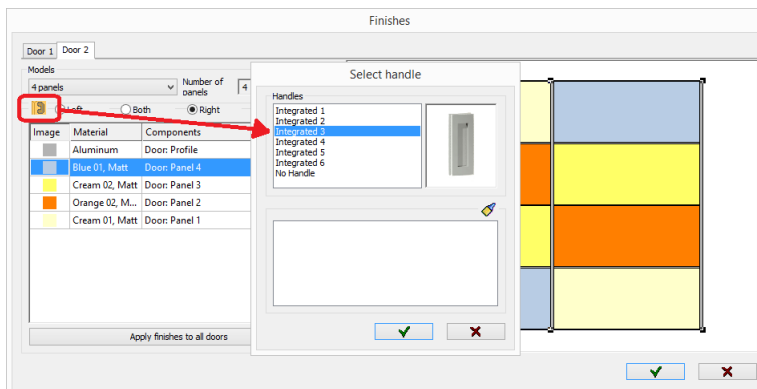
To open the door materials dialogue, in addition to clicking on the brush icon, now you can open it by double clicking on the door in the drawing. The new features in the door materials selection dialog are:



A preview of all doors is shown on the right. By clicking on the preview door, the door tab will change. In order to select a material for a panel, you can double-click on the panel in the preview. If you double-click on the '%' button or on the lock inside the panels list, the percentage dialogue will open up (if it is a door with just one panel, the material dialogue will open up). The panel list has been sorted to show the same order as in the image (the first panel is below and the last is above).

When changing a panel material, the material dialogue closes and it returns to the panels list showing the last selected panel.

A new option to place handles in sliding doors has been added. The models are different to the ones available for hinged doors. By default, one is placed on the first and last door and two handles on the rest, but you can change this selection.



UNIVERSAL CATALOGUE

- New moulding and end panel models have been added.
- New materials have been added:
 - The 'Color' palette has been completed with gloss and matte.
 - A 'Laminated' palette has been added.

